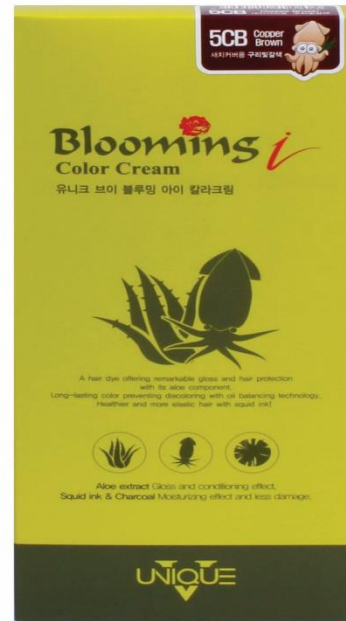
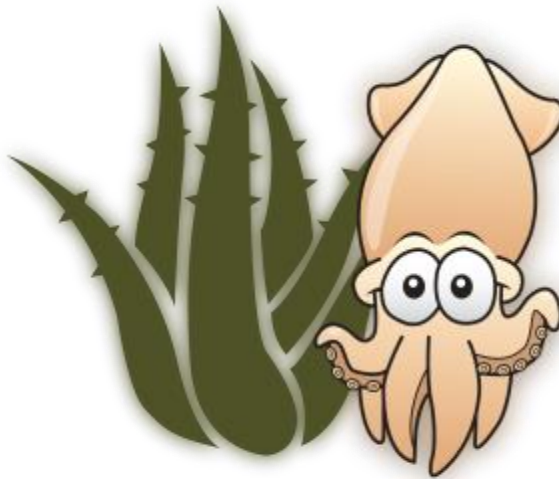


# Blooming *i* Color Cream



采用墨鱼汁，防脱色技术以及芦荟成分提炼。  
提供卓越的光泽和持久的色彩，有效保护头发更健康  
更有弹性。

Offers remarkable gloss and hair protection with its aloe component, long lasting color preventing discoloring with oil technology.  
Healthier and more elastic hair with squid ink.



## 2-1. 墨鱼汁 (오징어 성분 함유)

- 类似于人类头发中的黑色素
- 通过涂敷头发最大限度地减少损失
- 降低刺激头皮
- 给与头发提供足够的水分
- 采用专利的染料混合物木炭粉 ( 2008-0011559号 )
- Similar to the melanin in human hair
- Minimizes the damages by coating the hair
- Reduces the irritation to the scalp
- Gives moisture to the hair
- Patented dye mixture with charcoal powder ( No. 2008-0011559)



## 芦荟成分

- 赋予头发光泽和调理功效
- 帮助头发保持滋润和造型技术
- 减少了对头皮瘙痒
- pH值平衡
- Gives hair glossy and conditioning effectiveness
- Helps hair retain moisturized and volumized
- Reduces the itching on the scalp
- Ph balancing



## 油平衡技术

- 防止变色，让色彩长期持久
- 有助于将头皮轻松去除着色剂
- 通过调整增加了保湿功效让头发油和水分之间的平衡。
  - Long lasting color slowing down discoloration
  - Helps to remove easily the colorant from the scalp
  - Adds a moisturizing effectiveness to the hair by adjusting the balance between oil and moisture.



色彩



# 如何使用

## 1. 混合及应用

混合颜色素和氧化剂以 1比1。

开始从白发面积或新生长的头发开始涂抹至发尾。

使用梳子梳均匀涂抹的混合物。



## 1. Mixture and application

Mix the color cream and the oxidizing agent in ratio of 1 : 1.

Begin the application from the grey hair area or newly grown hair and spread the rest mixture through out the rest of hair.

Comb the hair well with the coloring comb to apply the mixture evenly.

## 2. 操作时间和方式

第一次染色，待20~30分钟，在室温下（20℃~25℃）。

重新染色（或触摸为新种植的头发的），敷在根分区和离开25分钟。当时间还剩5分钟，用梳子梳理全部头发，防止头发上的标记。



## 2. Development time

For the first time application, leave on for 20~30 minutes at the room temperature (20°C ~ 25°C).

For re-coloring (or touch up for newly grown hair), apply on the root area and leave on for 25 minutes. When the time is 5 minutes left, comb all of the hair to prevent marks on the hair.

## 3. 整理

使用少量的温水对头发和乳化的色彩搭配轻柔的按摩。用大量温水彻底冲洗干净。

## 3. Finishing

Pour a small quantity of warm water on the hair and emulsify the color with a gentle massage. Rinse off with plenty of warm water thoroughly.

Finish with a conditioner or treatment and style as usual.



## 容量

- Colorant : 220g
- Developer : 220g





Thanks